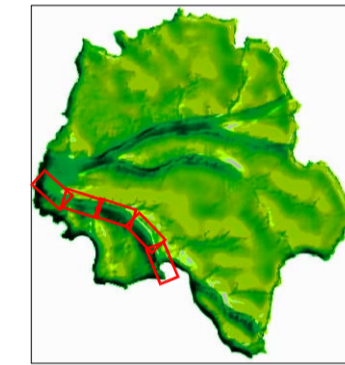


Plan de prévention des risques naturels prévisibles d'inondation

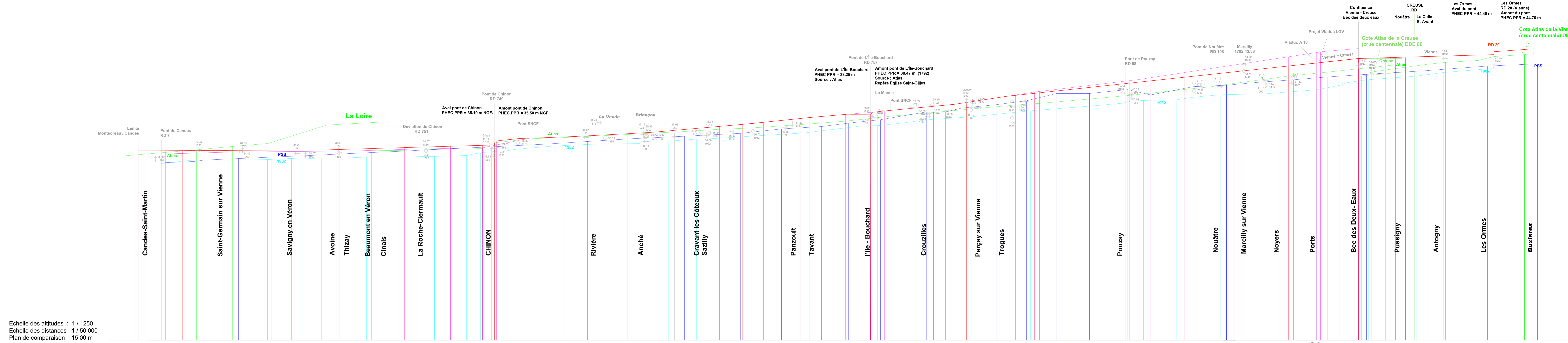
Val de Vienne

Dossier de consultation et d'enquête publique

Profil en long Hydraulique



Dossier de consultation et d'enquête publique
Mai 2011



Echelle des altitudes : 1 / 1250
Echelle des distances : 1 / 50 000
Plan de comparaison : 15,00 m

Altitude des plus Hautes Eaux du projet de PPR	Distance	Atlas Crue centennale modélisée (CETE)	PSS cote des plus hautes eaux (pour IGN Normalisé ajouter 0,20m)	Crue du 11/12/1982 (Relevé DDE)	Cote PHEC du PPR de la Loire (Crue de 1856)	Atlas : Tableau Ligne d'eau 1792 rapportée sur profils crue centennale (CETE)
34.50	0.00				34.00	34.26
34.50	431	34.18	33.25	33.19	34.30	34.45
34.50	697	34.18	33.25	33.19	34.30	34.45
34.54	1284	34.36	33.70	33.53	34.95	34.48
34.56	1568	34.40	33.85	33.60	35.25	34.53
34.58	1594	34.44	34.00	33.71	37.15	34.57
34.60	1942	34.49	34.17	33.78		34.65
34.68	2023	34.49	34.32	33.85	37.50	34.75
34.83	2168	34.55	34.47	33.86		34.81
34.88	2184	34.68	34.62	33.93		34.81
34.96	2214	34.77	34.77	33.95		35.10
35.06	2314	34.73	34.91	34.03		35.75
35.10	2391	35.35	34.91	34.30		35.81
35.50	2488	35.35	34.91	34.47		35.93
35.75	2538	35.74	35.18	34.49		36.16
35.81	2591	35.81	35.18	34.65		36.26
35.86	2614	35.86	35.18	34.99		36.42
35.93	2638	35.86	35.18	35.70		36.67
36.16	2684	36.18	35.46	35.16		37.01
36.26	2704	36.22	35.74	35.22		37.31
36.42	2734	36.33	35.74	35.24		37.43
36.67	2781	36.47	36.00	35.48		37.83
36.75	2804	36.72	36.00	35.49		38.24
37.01	2834	36.72	36.00	35.73		38.25
37.22	2864	36.81	36.30	36.00		38.60
37.31	2888	36.93	36.30	36.30		39.05
37.43	2914	37.31	36.75	36.47		39.47
37.83	2938	37.43	36.75	36.75		40.24
38.24	2964	37.83	37.00	37.20		40.55
38.25	2984	38.25	37.35	37.08		40.61
38.60	3014	38.06	37.70	37.09		41.17
38.63	3038	38.06	38.10	37.37		41.71
39.05	3064	38.42	38.10	37.37		42.02
39.47	3084	38.76	38.90	37.99		42.55
39.50	3104	39.05	39.25	38.62		42.95
40.09	3124	40.09	39.25	38.82		43.34
40.20	3144	39.21	39.65	39.08		43.92
40.42	3164	39.38	40.00	39.09		44.17
40.46	3184	40.46	40.00	39.68		44.74
40.97	3204	40.46	40.00	39.79		45.02
41.46	3224	41.46	40.40	39.14		45.02
41.70	3244	41.70	40.80	39.40		45.02
42.07	3264	42.07	40.25	39.60		45.02
42.35	3284	42.35	41.10	39.68		45.02
42.50	3304	42.50	41.25	39.75		45.02
42.63	3324	42.63	41.53	40.02		45.02
43.07	3344	43.07	41.81	40.27		45.02
43.25	3364	43.25	42.19	40.28		45.02
43.55	3384	43.55	42.58	40.37		45.02
43.57	3404	43.57	42.10	40.78		45.02
43.65	3424	43.65	42.10	41.24		45.02
44.00	3444	44.00	42.37	41.51		45.02
44.06	3464	44.06	42.37	41.74		45.02
44.12	3484	44.12	42.37	41.82		45.02
44.17	3504	44.17	42.37	42.60		45.02
44.22	3524	44.22	42.74	42.90		45.02
44.28	3544	44.28	42.74	43.10		45.02
44.40	3564	44.40	43.22	43.40		45.02
44.70	3584	44.70	43.22	43.60		45.02
44.76	3604	44.76	43.45	43.80		45.02
45.00	3624	45.00	43.45	44.20		45.02
	3644		43.45	44.40		45.02
	3664		43.45	44.50		45.02